

Larva and Adult Antlion Body Parts

Scientific Background

Antlions have three body parts—head, thorax, and abdomen. They also have three pairs of legs. The two pairs of wings in the adult are attached to the thorax. The larva's antennae are very small and are used to detect prey and predators. The adult antlion's antennae are knobbed.

The antlion larva lives in areas with dry soil or sand. It eats ants or other small insects and moves along with their six legs. The antlion adult sips nectar from flowers and flies with their two pairs of wings. Adults are found in trees or bushes near sandy areas.

Vocabulary

- abdomen
- antennae
- bristles
- head
- jaws
- knobbed
- larva
- nectar
- thorax
- transparent
- wing

*Vocabulary definitions can be found in the **Backyard Bugs** Glossary.*

Thinking Question

What advantages does the adult antlion have because of its wings?

Exploratory and Extension Activities

*Additional Exploratory and Extension activities are available in the **Backyard Bugs Teacher's Guide**.*

Doodlebug Music

Visit <http://www.nativeground.com/nature.asp> for clips of songs related to bugs. Listen to clips from *Crawdads, Doodlebugs & Creasy Greens* by Doug Elliott. Help students identify the different instruments as they are playing in the songs.

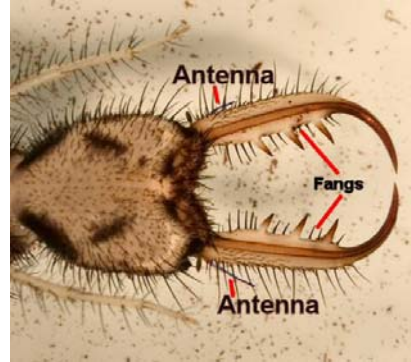
Writing an ABC Book

Have students create their own ABC **Backyard Bugs** books. Draw and color illustrations to go along with a student-generated book called *My Backyard Bugs ABC Book*. For example, students could use the Luna moth for L and hickory horned devil for H.

Name: _____

Larva and Adult Antlion Body Parts

Draw lines.
Match the words to the body parts of the antlion larva and adult.



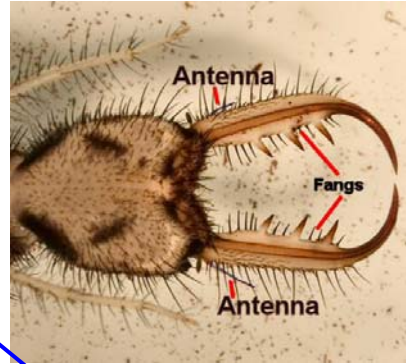
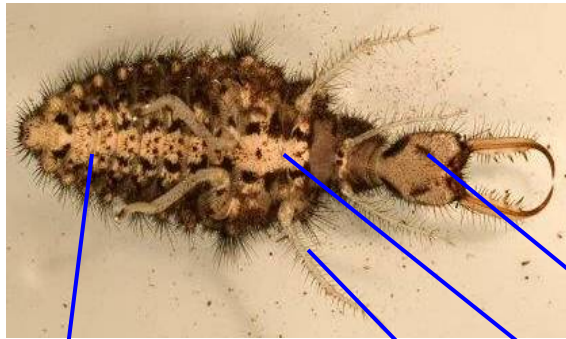
Abdomen - Wings - Legs - Thorax - Head - Antennae



How are an antlion larva and an antlion adult the same? How are they different?			
	Food	Locomotion	Habitat
Antlion Larva			
Antlion Adult			

Answer Key
Larva and Adult Antlion Body Parts

Draw lines.
Match the words to the body parts of the antlion larva and adult.



Abdomen - Wings - Legs - Thorax - Head - Antennae



How are an antlion larva and an antlion adult the same?
How are they different?

	Food	Locomotion	Habitat
Antlion Larva	<i>Ants or other small insects</i>	<i>Walks with six legs</i>	<i>Sand or dry soil</i>
Antlion Adult	<i>Nectar from flowers</i>	<i>Flies with two pairs of wings</i>	<i>Trees and bushes near sandy areas</i>