

Insect or Spider?

Scientific Background

Spiders are classified as *arachnids*. They have an exoskeleton and a two-part segmented body, called a cephalothorax. Spiders have four pairs of legs. They have two chelicerae, which are like fangs on the spider's mouth. Spiders also have appendages called pedipalps that are used as feelers.

In contrast, insects have three body parts: a head, an abdomen, and a thorax. Insects have three pairs of legs, which are adapted for running, or swimming in some insect species. Insects have flexible, sensitive antennae, which help them detect food. By having compound eyes, with many lenses to see with, insects are very good at detecting moving objects in their environment such as prey or predators. Adult insects may have one or two pairs of wings attached to their thorax.

Vocabulary

- abdomen
- antennae
- cephalothorax
- compound eyes
- fangs
- head
- jaws
- mouthparts
- pronotum
- thorax
- adapted
- arachnid
- chelicerae
- exoskeleton
- flexible
- insect
- leathery
- pedipalps
- spinneret
- wings

*Vocabulary definitions can be found in the **Backyard Bugs** Glossary.*

Thinking Question

How are cockroaches different from spiders?

Exploratory and Extension Activities

Additional Exploratory and Extension activities are available in the Backyard Bugs Teacher's Guide.

Cockroach Conga

Obtain the CD *Spinning Tails* by Steve Pullara and His Cool Beans Band (Released 2001, ASIN B00005Q6ZT). Teach the song *Cockroach Conga*. Students can also put this song into a Conga dance.

Reading and Literature

Read works of literature about insects or spiders to the students. These are two suggestions:

Cockroach Cooties (Laurence Yep, Hyperion Paperbacks for Children, 2000. ISBN: 0786813385).

Charlotte's Web (E.B. White, Illustrations by Garth Williams, HarperTrophy Books, 1974, ISBN: 0064400557).

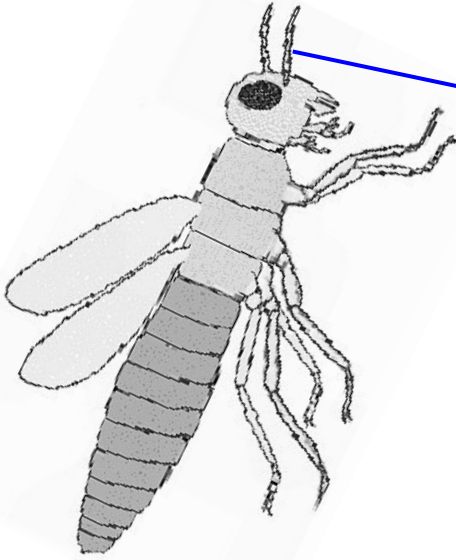
Name: _____

Insect or Spider?

Draw lines.
Match the words to the body parts of the insect or the spider.

Insect

Spider



**Eight
Legs**

Antennae

Wings

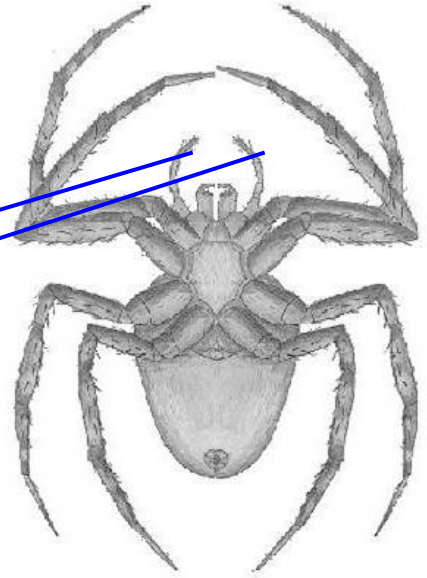
Pedipalps

**Two
Body
Parts**

Six Legs

**Three
Body
Parts**

Spinneret

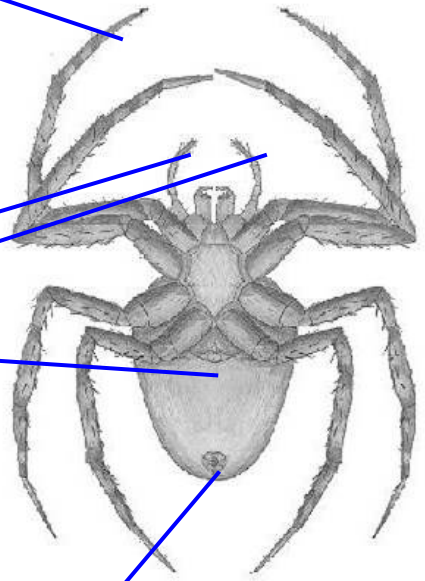
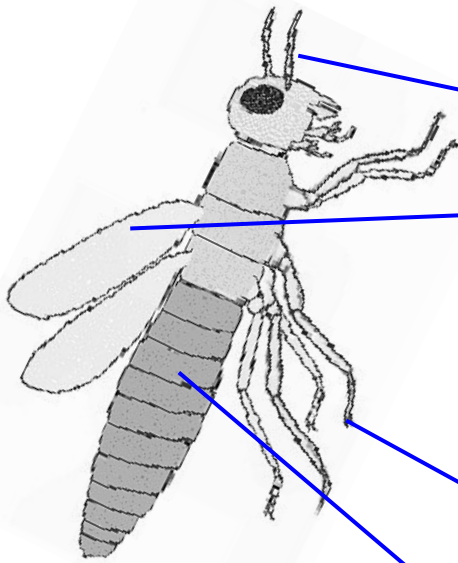


Answer Key
Insect or Spider?

Draw lines.
Match the words to the body parts of the insect or the spider.

Insect

Spider



- Eight Legs**
- Antennae**
- Wings**
- Pedipalps**
- Two Body Parts**
- Six Legs**
- Three Body Parts**
- Spinneret**